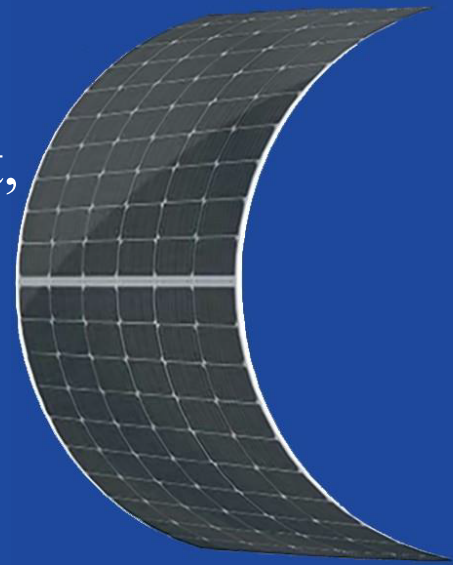


# HG-L Lightweight & Flexible Series

Greatly decreased the product weight,  
far less cost to install.

# 375W-395W



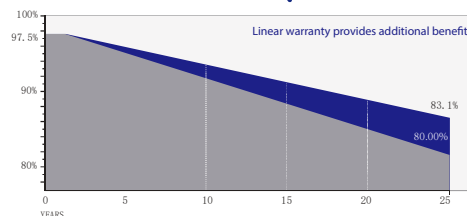
## • Products Features

- Lightweight, Ultra-high flexibility, Easy to install.
- Reducing the adaptive loss to get higher power.
- Competitive weak light tolerance performance.
- Minimizing the shading affection to reduce power loss.
- The superior reliability has been proven through rigorous weathering test:
  - Sand and dust resistance, acid and alkali-resistance, salt mist resistance
  - Anti- PID
  - Hail shock resistance

## • Quality System

ISO9001  
ISO14001  
ISO45001

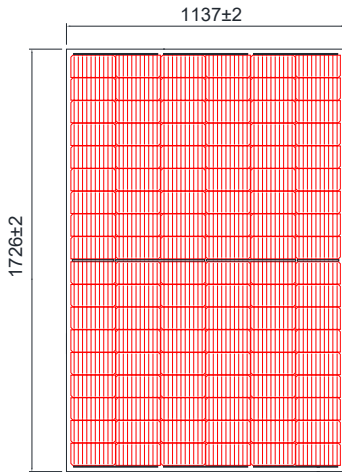
## • Product Warranty



Quality and process performance Assurance

**Address:** No.633 Chengnan Avenue, Banqiao Industrial Park, Rongchang District, Chongqing, China

**Website:** [www.hg-energy-group.cn](http://www.hg-energy-group.cn)



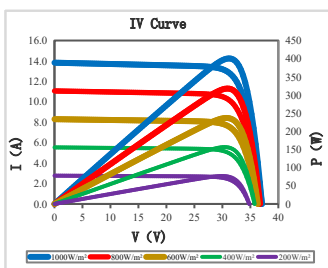
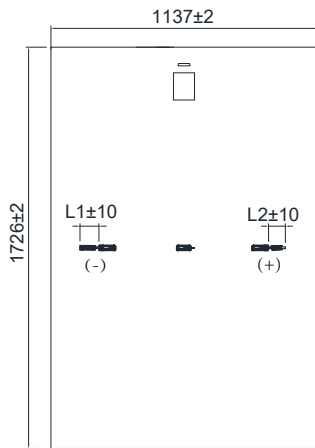
### Electrical Parameters

Module Type	HG-L375-54CW		HG-L380-54CW		HG-L385-54CW		HG-L390-54CW		HG-L395-54CW	
	STC	NMOT	STC	NMOT	STC	NMOT	STC	NMOT	STC	NMOT
Maximum Power ( $P_{mp}$ )	375W	279W	380W	283W	385W	286W	390W	290W	395W	294W
Open Circuit Voltage ( $V_{oc}$ )	36.95V	34.36V	37.15V	34.55V	37.29V	34.68V	37.43V	34.81V	37.60V	34.97V
Short Circuit Current ( $I_{sc}$ )	13.43A	10.84A	13.52A	10.91A	13.59A	10.97A	13.67A	11.03A	13.75A	11.10A
Max Power Voltage ( $V_{mp}$ )	30.36V	28.78V	30.57V	28.97V	30.70V	29.10V	30.85V	29.24V	31.01V	29.39V
Max Power Current ( $I_{mp}$ )	12.36A	9.69A	12.45A	9.77A	12.55A	9.83A	12.66A	9.92A	12.74A	10.00A
Module Efficiency STC ( $\eta_{STC}$ )	19.1%		19.4%		19.6%		19.9%		20.1%	
Power Tolerance	0~+5W									
Maximum System Voltage	1500V DC									
Max Serie Fuse Rating	25A									

STC: irradiance 1000W/m<sup>2</sup> module temperature 25°C AM=1.5  
 NMOT: irradiance of 800W / m<sup>2</sup>, ambient temperature 20°C, and wind speed 1m / s  
 The uncertainty of Pmax, Voc, Isc testing is ± 3%

### Mechanical Specifications

External Dimension	1726mm*1137mm	
Type	Enhanced Version	High Performance Version
Thickness	3.4 ± 0.2mm	3.6 ± 0.2mm
Weight	8 ± 0.5kg	9 ± 0.5kg
Solar Cell	Mono crystalline 182*91mm, 108 (6*18)	
Frame	/	
GLASS	/	
Junction Box	IP68, 3diodes, MC4 compatible	
Output Cables	4.0mm <sup>2</sup> (IEC), 250~300mm(+)/250~300mm(-) or Customized Length	



### Temperature characteristic

Pmax Temperature Coefficient	-0.35 %/° C
Voc Temperature Coefficient	-0.26 %/° C
Isc Temperature Coefficient	+0.047 %/° C
Operating Temperature	-40 ~ +85 ° C
Nominal module operation temperature	45 ± 2 ° C

### Package

Packing Unit	40HQ	17.5m platform truck
PCS/CTNS	68	68
Qty of Package	24	36
PCS/Packages	1632	2448