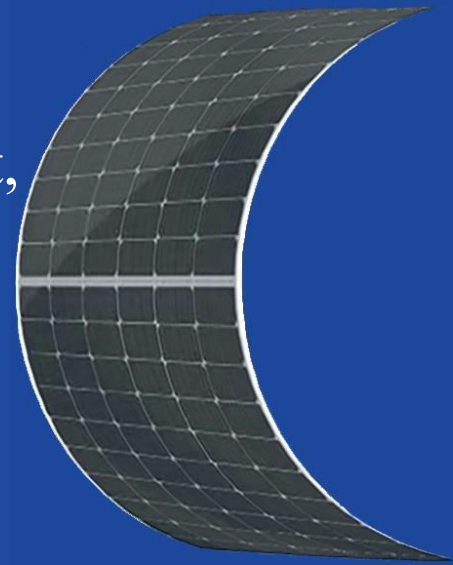


HG-L Lightweight & Flexible Series

Greatly decreased the product weight,
far less cost to install.

420W-440W



• Products Features

- Lightweight, Ultra-high flexibility, Easy to install.
- Reducing the adaptive loss to get higher power.
- Competitive weak light tolerance performance.
- Minimizing the shading affection to reduce power loss.
- The superior reliability has been proven through rigorous weathering test:
 - Sand and dust resistance, acid and alkali-resistance, salt mist resistance
 - Anti- PID
 - Hail shock resistance
 - 2400Pa wind pressure and 2400Pa snow pressure

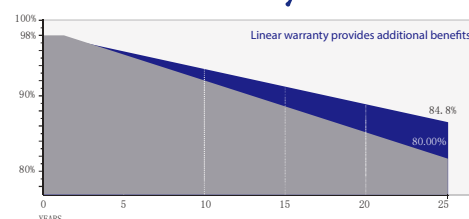
• Quality System

ISO9001
ISO14001
ISO45001

• Product Certification



• Product Warranty



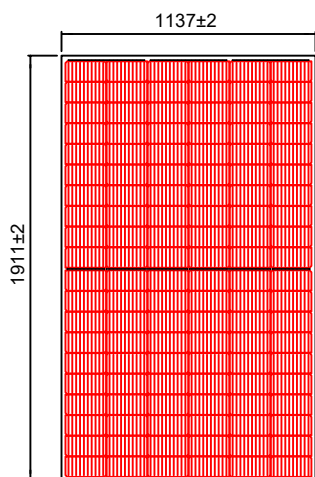
12 YEARS Quality and process performance Assurance



25 YEARS Liner power Output Warranty

Address: No.633 Chengnan Avenue, Banqiao Industrial Park, Rongchang District, Chongqing, China

Website: www.hg-energy-group.cn



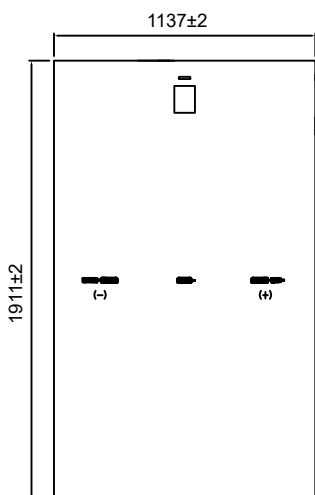
Electrical Parameters

Module Type	HG-L420-60CW		HG-L425-60CW		HG-L430-60CW		HG-L435-60CW		HG-L440-60CW	
	STC	NMOT	STC	NMOT	STC	NMOT	STC	NMOT	STC	NMOT
Maximum Power ($P_{m\max}$)	420W	312W	425W	316W	430W	320W	435W	324W	440W	327W
Open Circuit Voltage (V_{oc})	41.13V	38.32V	41.28V	38.46V	41.43V	38.60V	41.58V	38.75V	41.73V	38.89V
Short Circuit Current (I_{sc})	13.48A	10.88A	13.55A	10.94A	13.62A	10.99A	13.69A	11.05A	13.76A	11.11A
Max Power Voltage (V_{mp})	33.88V	32.11V	34.03V	32.25V	34.18V	32.40V	34.33V	32.54V	34.48V	32.68V
Max Power Current (I_{mp})	12.41A	9.72A	12.51A	9.80A	12.60A	9.88A	12.68A	9.96A	12.77A	10.01A
Module Efficiency STC (η_s)	19.3%		19.6%		19.8%		20.0%		20.3%	
Power Tolerance	0~+5W									
Maximum System Voltage	1500V DC									
Max Serie Fuse Rating	25A									

STC: irradiance 1000W/m² module temperature 25°C AM=1.5

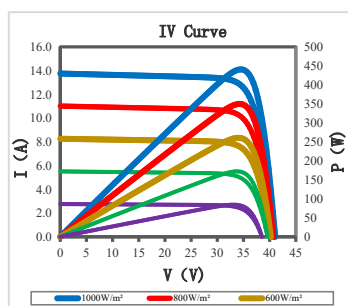
NMOT: irradiance of 800W / m², ambient temperature 20°C, and wind speed 1m / s

The uncertainty of Pmax, Voc, Isc testing is ± 3%



Mechanical Specifications

External Dimension	1911mm*1137mm	
Version	Enhanced Version	High Performance Version
Thickness	3.4 ± 0.2mm	3.6 ± 0.2mm
Weight	9 ± 0.5kg	10 ± 0.5kg
Solar Cell	Mono crystalline 182*91mm, 120 (6*20)	
Frame	/	
GLASS	/	
Junction Box	IP68, 3 diodes, MC4 compatible	
Output Cables	4.0mm ² (IEC), 250~300mm(+)/250~300mm(-) or Customized Length	



Temperature characteristic

Pmax Temperature Coefficient	-0.35 %/°C
Voc Temperature Coefficient	-0.26 %/°C
Isc Temperature Coefficient	+0.047 %/°C
Operating Temperature	-40 ~ +85 °C
Nominal module operation temperature	45 ± 2 °C

Package

Packing Unit	40HQ	17.5m platform truck
PCS/CTNS	68	68
Qty of Package	22	32
PCS/Packages	1496	2176