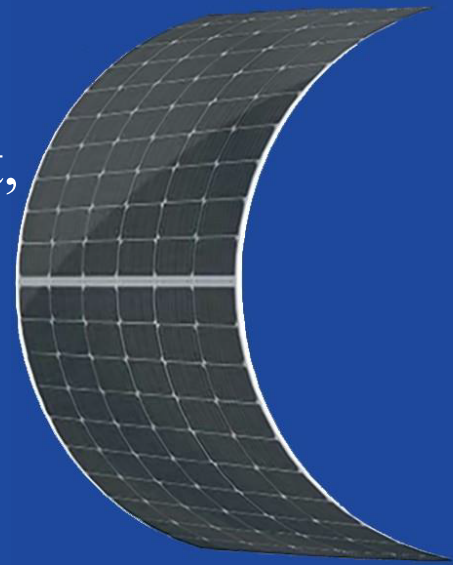


# HG-L Lightweight & Flexible Series

Greatly decreased the product weight,  
far less cost to install.

# 460W-480W



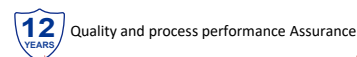
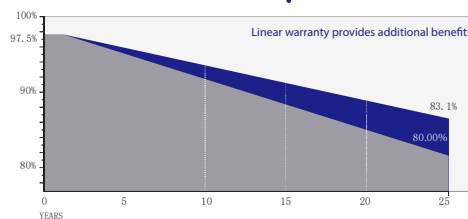
## • Products Features

- Lightweight, Ultra-high flexibility, Easy to install.
- Reducing the adaptive loss to get higher power.
- Competitive weak light tolerance performance.
- Minimizing the shading affection to reduce power loss.
- The superior reliability has been proven through rigorous weathering test:
  - Sand and dust resistance, acid and alkali-resistance, salt mist resistance
  - Anti- PID
  - Hail shock resistance

## • Quality System

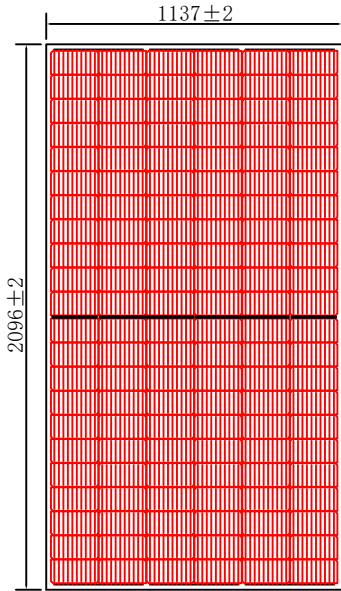
ISO9001  
ISO14001  
ISO45001

## • Product Warranty



**Address:** No.633 Chengnan Avenue, Banqiao Industrial Park, Rongchang District, Chongqing, China

**Website:** [www.hg-energy-group.cn](http://www.hg-energy-group.cn)



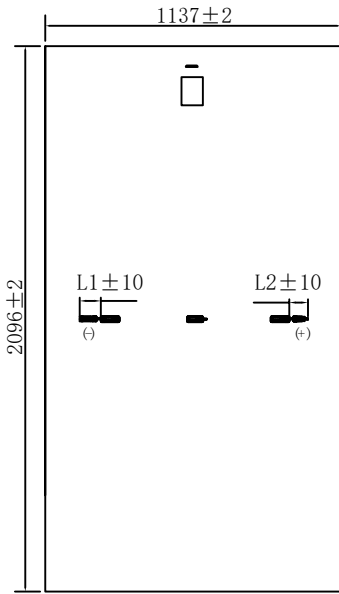
## Electrical Parameters

Module Type	HG-L460-66CW		HG-L465-66CW		HG-L470-66CW		HG-L475-66CW		HG-L480-66CW	
	STC	NMOT	STC	NMOT	STC	NMOT	STC	NMOT	STC	NMOT
Maximum Power ( $P_{max}$ )	460W	342W	465W	346W	470W	350W	475W	353W	480W	357W
Open Circuit Voltage ( $V_{oc}$ )	45.05V	42.03V	45.20V	42.18V	45.35V	42.32V	45.50V	42.46V	45.65V	42.60V
Short Circuit Current ( $I_{sc}$ )	13.37A	10.79A	13.44A	10.85A	13.51A	10.90A	13.58A	10.96A	13.65A	11.02A
Max Power Voltage ( $V_{mp}$ )	37.17V	35.23V	37.32V	35.37V	37.47V	35.51V	37.62V	35.66V	37.77V	35.80V
Max Power Current ( $I_{mp}$ )	12.39A	9.71A	12.48A	9.78A	12.56A	9.86A	12.64A	9.90A	12.72A	9.97A
Module Efficiency STC ( $\eta_s$ )	19.3%		19.5%		19.7%		19.9%		20.1%	
Power Tolerance	0~+5W									
Maximum System Voltage	1500V DC									
Max Serise Fuse Rating	25A									

STC: irradiance 1000W/m<sup>2</sup> module temperature 25°C AM=1.5

NMOT: irradiance of 800W / m<sup>2</sup>, ambient temperature 20°C, and wind speed 1m / s

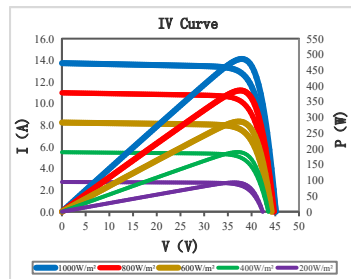
The uncertainty of Pmax, Voc, Isc testing is ± 3%



## Mechanical Specifications

External Dimension	2096mm*1137mm	
Version	Enhanced Version	High Performance Version
Thickness	3.4±0.2mm	3.6±0.2mm
Weight	10±0.5kg	11±0.5kg
Solar Cell	Mono crystalline 182*91mm, 132 (6*22)	
Frame	/	
GLASS	/	
Junction Box	IP68, 3 diodes, MC4 compatible	
Output Cables	4.0mm <sup>2</sup> (IEC), 250~300mm(+)/250~300mm(-) or Customized Length	

## Temperature characteristic



Pmax Temperature Coefficient	-0.35 %/°C
Voc Temperature Coefficient	-0.26 %/°C
Isc Temperature Coefficient	+0.047 %/°C
Operating Temperature	-40 ~ +85 °C
Nominal module operation temperature	45 ± 2 °C

## Package

Packing Unit	40HQ	17.5m platform truck
PCS/CTNS	68	68
Qty of Package	20	32
PCS/Packages	1360	2176