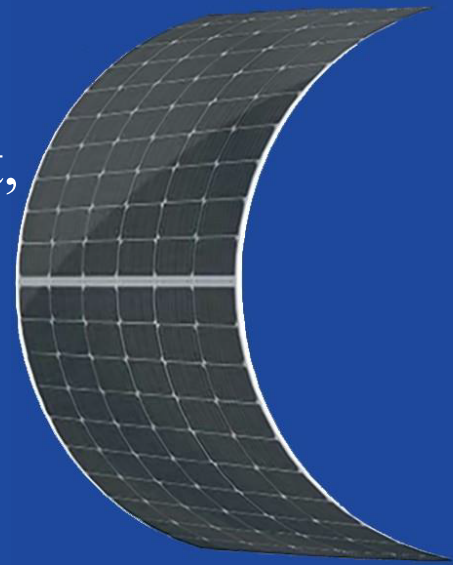


HG-L Lightweight & Flexible Series

Greatly decreased the product weight,
far less cost to install.

460W-480W



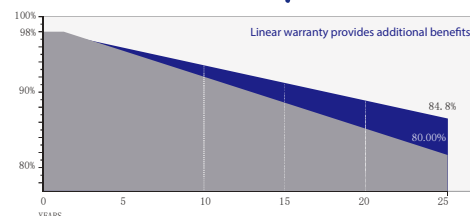
• Products Features

- Lightweight, Ultra-high flexibility, Easy to install.
- Reducing the adaptive loss to get higher power.
- Competitive weak light tolerance performance.
- Minimizing the shading affection to reduce power loss.
- The superior reliability has been proven through rigorous weathering test:
 - Sand and dust resistance, acid and alkali-resistance, salt mist resistance
 - Anti- PID
 - Hail shock resistance
 - 2400Pa wind pressure and 2400Pa snow pressure

• Quality System

ISO9001
ISO14001
ISO45001

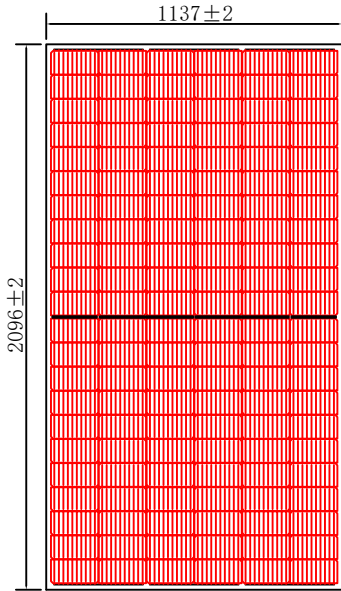
• Product Warranty



Quality and process performance Assurance



Liner power Output Warranty



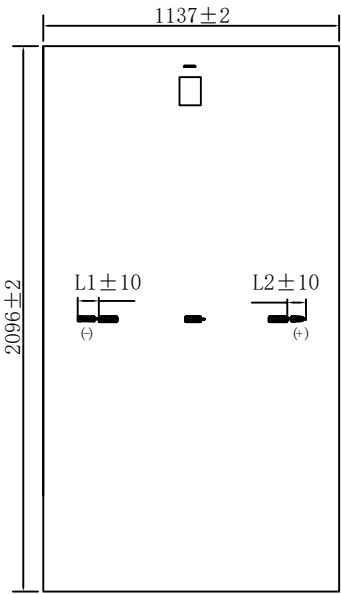
Electrical Parameters

| Module Type | HG-L460-66CW | | HG-L465-66CW | | HG-L470-66CW | | HG-L475-66CW | | HG-L480-66CW | |
|------------------------------------|--------------|--------|--------------|--------|--------------|--------|--------------|--------|--------------|--------|
| | STC | NMOT | STC | NMOT | STC | NMOT | STC | NMOT | STC | NMOT |
| Maximum Power (P_{max}) | 460W | 342W | 465W | 346W | 470W | 350W | 475W | 353W | 480W | 357W |
| Open Circuit Voltage (V_{oc}) | 45.05V | 42.03V | 45.20V | 42.18V | 45.35V | 42.32V | 45.50V | 42.46V | 45.65V | 42.60V |
| Short Circuit Current (I_{sc}) | 13.37A | 10.79A | 13.44A | 10.85A | 13.51A | 10.90A | 13.58A | 10.96A | 13.65A | 11.02A |
| Max Power Voltage (V_{mp}) | 37.17V | 35.23V | 37.32V | 35.37V | 37.47V | 35.51V | 37.62V | 35.66V | 37.77V | 35.80V |
| Max Power Current (I_{mp}) | 12.39A | 9.71A | 12.48A | 9.78A | 12.56A | 9.86A | 12.64A | 9.90A | 12.72A | 9.97A |
| Module Efficiency STC (η_s) | 19.3% | | 19.5% | | 19.7% | | 19.9% | | 20.1% | |
| Power Tolerance | 0~+5W | | | | | | | | | |
| Maximum System Voltage | 1500V DC | | | | | | | | | |
| Max Serise Fuse Rating | 25A | | | | | | | | | |

STC: irradiance 1000W/m² module temperature 25°C AM=1.5

NMOT: irradiance of 800W / m², ambient temperature 20°C, and wind speed 1m / s

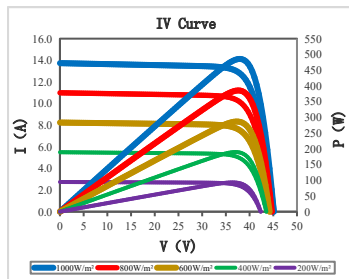
The uncertainty of Pmax, Voc, Isc testing is ± 3%



Mechanical Specifications

| | |
|--------------------|--|
| External Dimension | 2096mm*1137mm |
| Weight | 10±0.5kg |
| Solar Cell | Mono crystalline 182*91mm, 132 (6*22) |
| Frame | / |
| GLASS | / |
| Junction Box | IP68, 3 diodes, MC4 compatible |
| Output Cables | 4.0mm ² (IEC), 250~300mm(+)/250~300mm(-) or Customized Length |

Temperature characteristic



| | |
|--------------------------------------|--------------|
| Pmax Temperature Coefficient | -0.35 %/°C |
| Voc Temperature Coefficient | -0.26 %/°C |
| Isc Temperature Coefficient | +0.047 %/°C |
| Operating Temperature | -40 ~ +85 °C |
| Nominal module operation temperature | 45 ± 2 °C |

Package

| | | |
|----------------|------|----------------------|
| Packing Unit | 40HQ | 17.5m platform truck |
| PCS/CTNS | 68 | 68 |
| Qty of Package | 20 | 32 |
| PCS/Packages | 1360 | 2176 |